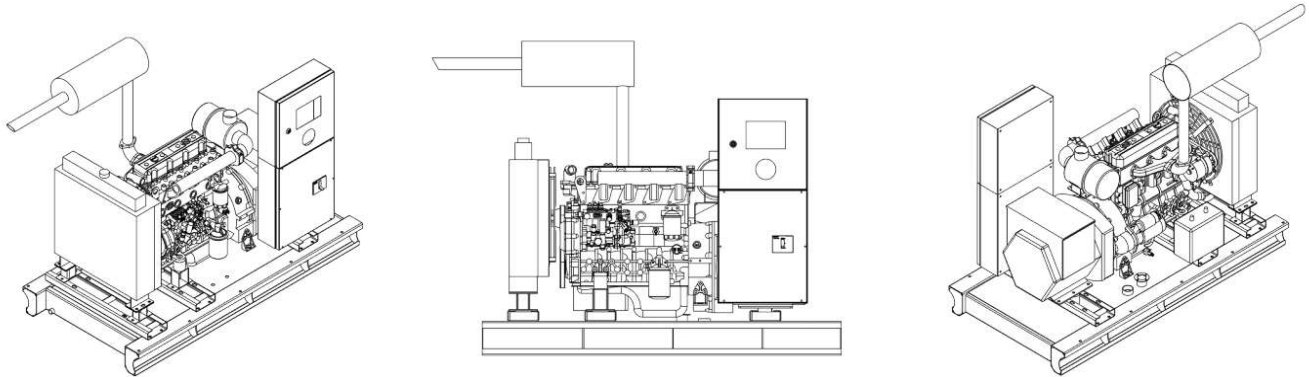


## Product Code: RGS-1500-BD 50 Hz Diesel Generator Set



### Power Output

---

Standby Power (kVA):	1504
Prime Power (kVA):	1361

---

### Dimensions & Weight

---

	W x L x H (mm)			Weight (kg)	Fuel Tank Capacity (Lt)
Soundproof	TBA	TBA	TBA	TBA	1600
Open Frame	TBA	TBA	TBA	TBA	1600

---

### Definitions of Applications

---

#### Standby Power

Emergency standby power is defined as the maximum power available during a variable electrical power sequence, under the stated operating conditions, for which a generating set is capable of delivering in the event of a utility power outage or under test conditions for up to 200h of operation per year with the maintenance intervals and procedures being carried out as prescribed by manufacturers. The permissible average output over 24h of operation shall not exceed 70% of the ESP unless otherwise agreed by the engine manufacturer. With standby rated generators there is no overload capability. (ISO8528-1 : 2018)

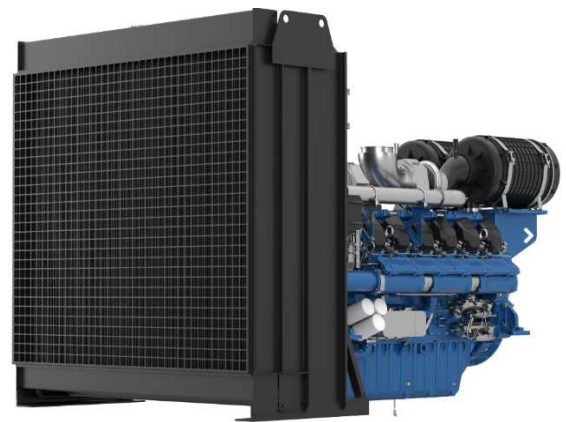
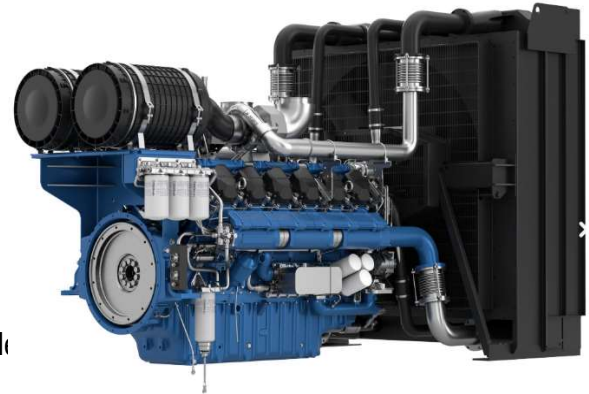
#### Prime Power

Prime power is defined as being the maximum power which a generating set is capable of delivering continuously while supplying a variable electrical load when operated for an unlimited number of hours per year under the agreed operating conditions with the maintenance intervals and procedures being carried out as prescribed by the manufacturer. The permissible average power output, over 24 h of operation shall not exceed 70 % of the Prime power unless otherwise agreed by the RIC engine manufacturer. Unless otherwise stated, and taking into account the site operating conditions (refer to the manufacturer data sheet), a 10 % overload power is permitted for a period of one hour with or without interruptions, within 12 hours of operation. (ISO8528-1 : 2018)

## ENGINE

---

Engine Brand	Baudouin
Engine Model	12M33G1500-5
Cylinder Configuration	V-Type
Number of Cylinders	12
Displacement (Lt)	39,2
Bore (mm)	150
Stroke (mm)	185
Compression Ratio	15:1
Aspiration Type	Turbo-Charged / Aftercool
Governor Type	Electronic
Cooling System	Water
Coolant Capacity	188 lt
Lubrication Oil Capacity	155 lt
Electrical System (DC)	24
Speed/ Frequency	1500 rpm / 50 Hz
Engine Gross Power	1320 KW
Fuel Consumption %110 ESP	330,5 lt/h
Fuel Consumption %100 ESP	296,9 lt/h
Fuel Consumption %75 ESP	214,4 lt/h
Fuel Consumption %50 ESP	146,2 lt/h
Exhaust Outlet Temperature	550 C°
Exhaust Gas Flow	277 m3/ min
Combustion Air Flow	83,5 m3/ min
Cooling Air Flow	1140 m3/ min



## ALTERNATOR

---

No of Phases	3
Power Factor	0,8
No of Bearings	Single
No of Poles	4
No of Leads	6 -12
Insulation Class	H
Degree of Protection	IP23
Excitation System	AVR

## STANDARD COMPONENTS

---

### ENGINE

RGS POWER generator has a wide engine range. In RGS generator sets, leading engine brands that have state of the art technology and have compliance with ISO 8528, ISO 3046, BS 5514, DIN 6271 standards, are being used. Low fuel consumption, high first step load capacity and common spare parts are the prominent features

### ALTERNATOR

In RGS generator sets, the using alternators are leading alternator brands. All alternators are pass necessary test process in mentioned IEC60034, BS4999-5000, VDE0530. There is no need bearing maintenance.

### CONTROL PANEL

Standard control panel, that is used in RGS generator sets, ensures comfortable and safe usage. All measured and statistical parameters, operating modes, notice and alarms and condition of generator, are monitored easily from the control panel. On the front of the panel's metal body has electronic control module and the emergency stop button and the panel's metal body is made of steel sheet and is painted with electrostatic powder paint. The customer can monitor all fault in control panel screen.

### BASEFRAME AND FUEL TANK

Baseframe is manufactured from steel that has features and durability for carrying burden of generator set. All baseframes contain lifting lugs. All baseframes design and manufacturing are done by RGS generator in our own facility. All fuel tanks are made pressure test. The customer can see fuel level on fuel tank in all RGS generators.

### COOLING SYSTEM

All RGS generators are ready to work in high temperatures or low temperatures. All designs and equipment simulations are made by R&D team in RGS power.

### SOUNDPROOF CANOPY

RGS POWER 's canopies are manufactured in house. Our soundproof canopies are modular type & their installation is executed with screws and nuts without welding process. The canopies are designed for easy access to reduce effort and time spent during maintenance. Emergency stop button and control panel inspection window are standard design features in RGS POWER generator sets. Depending on request, RGS POWER can make container type soundproof enclosures.

## OPTIONAL FEATURES

---

Cold climate package (Panel heater, alternator heater, webasto, oil heater, fuel heater)

Hot climate package (Tropical type radiator, industrial type air conditioning)

Remote radiator applications

Synchronisation Systems (Generator – generator, generator – mains)

Double bearing alternators

Air starting systems

Pre-lubrication systems

Above ground – under ground fuel tanks

Fuel automation systems

Residential or critical type silencer

PMG or AREP excitation systems

High voltage alternators

Seismic solutions

Digital voltage regulator

Protection circuit breakers

Synchronisation panels, transfer panels (3 pole or 4 pole)

Special painting for harsh climate

RGS POWER generator sets are produced in accordance with TSE, CE, ISO9001, ISO14001 standards

Technical information and values are according to ISO8528, ISO3046, IEC 600341, BS 4999-5000, VDE 0530 standards

Due to a continuous improvement policy RGS POWER reserves the right to amend details and specifications without prior notice and all information given is subject to the RGS POWER's current commercial conditions © RGS